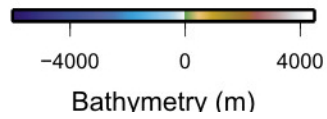
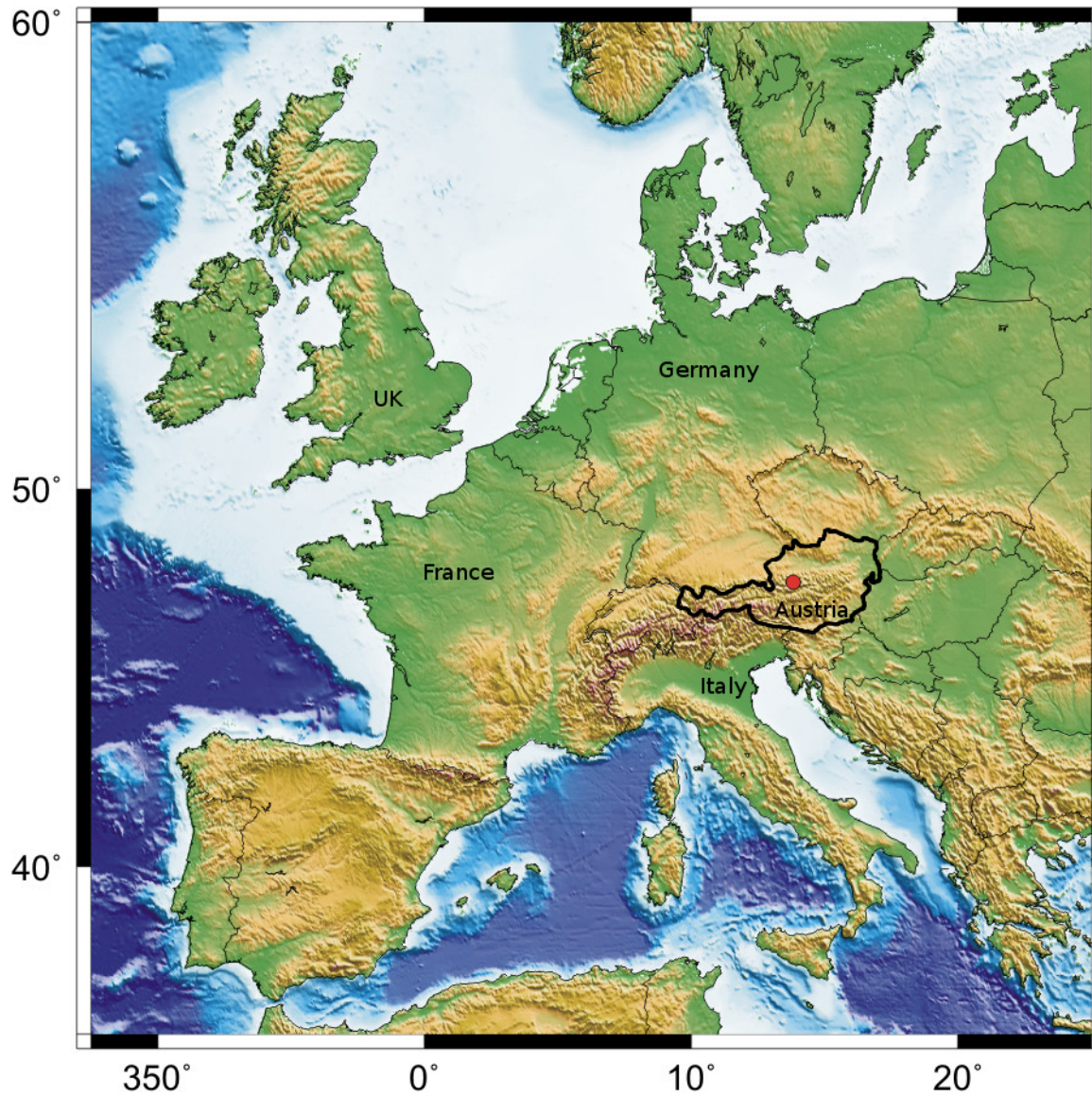


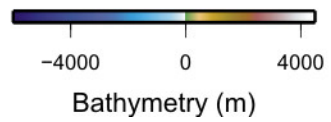
Caving in Austria with CUCC

1976-2008



Jenny Black







Gasthof Staud'nwirt







Eislufthöhle entrance, 1977



Andy Waddington, 1977

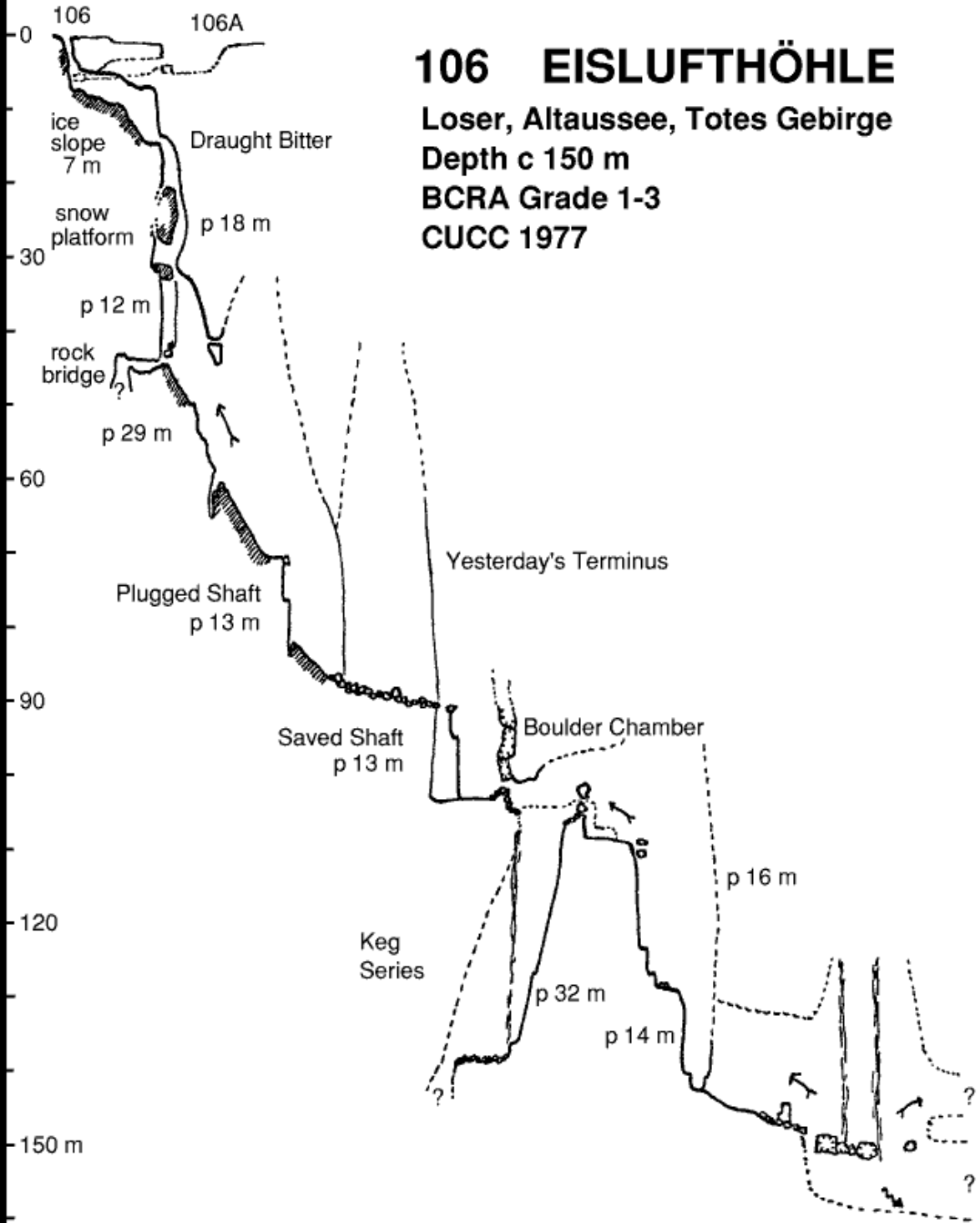
106 EISLUFTHÖHLE

Losser, Altaussee, Totes Gebirge

Depth c 150 m

BCRA Grade 1-3

CUCC 1977



106 EISLUFTHÖHLE

Loser, Altaussee, Totes Gebirge

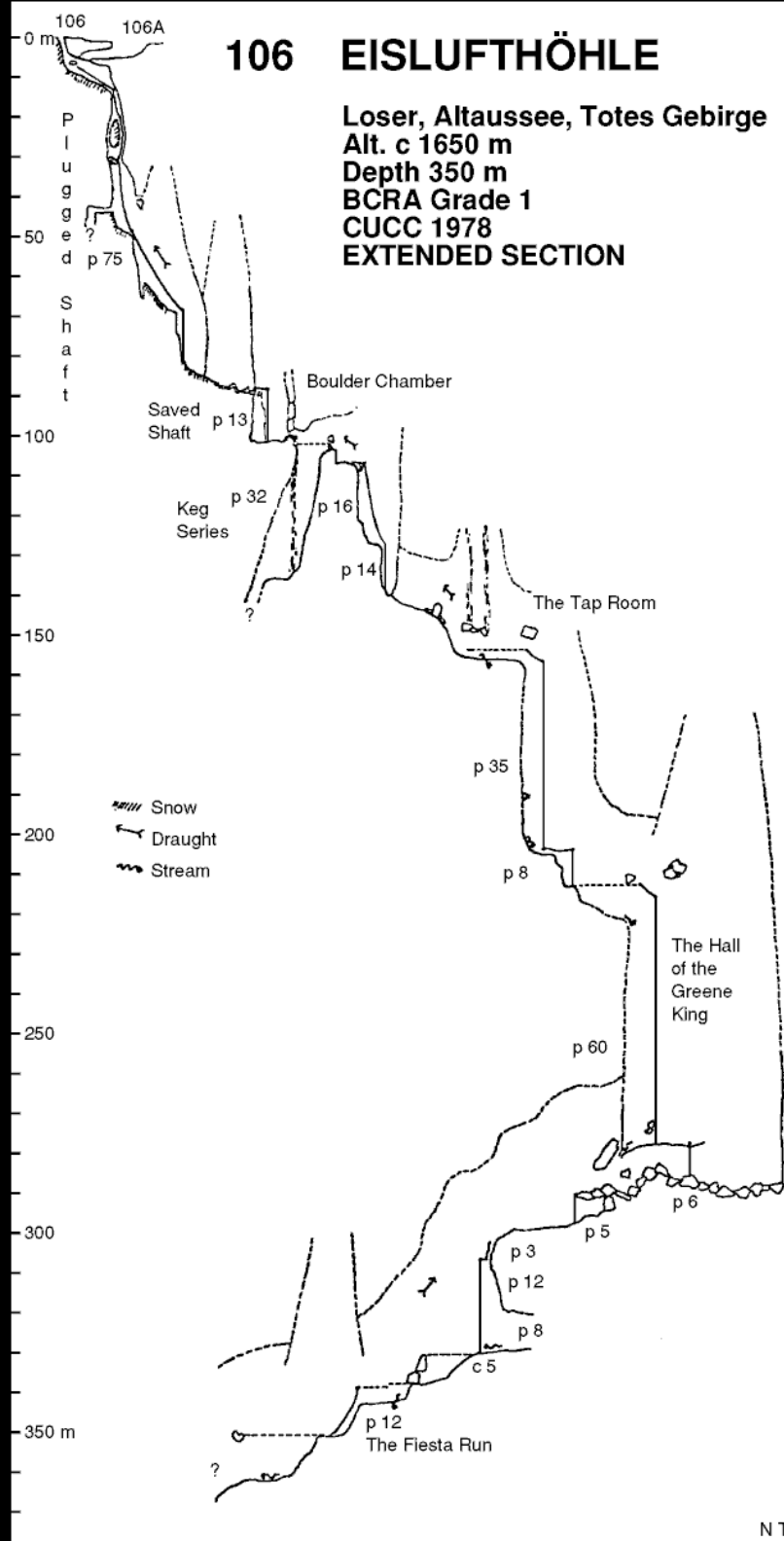
Alt. c 1650 m

Depth 350 m

BCRA Grade 1

CUCC 1978

EXTENDED SECTION



Eislufthöhle, 1979



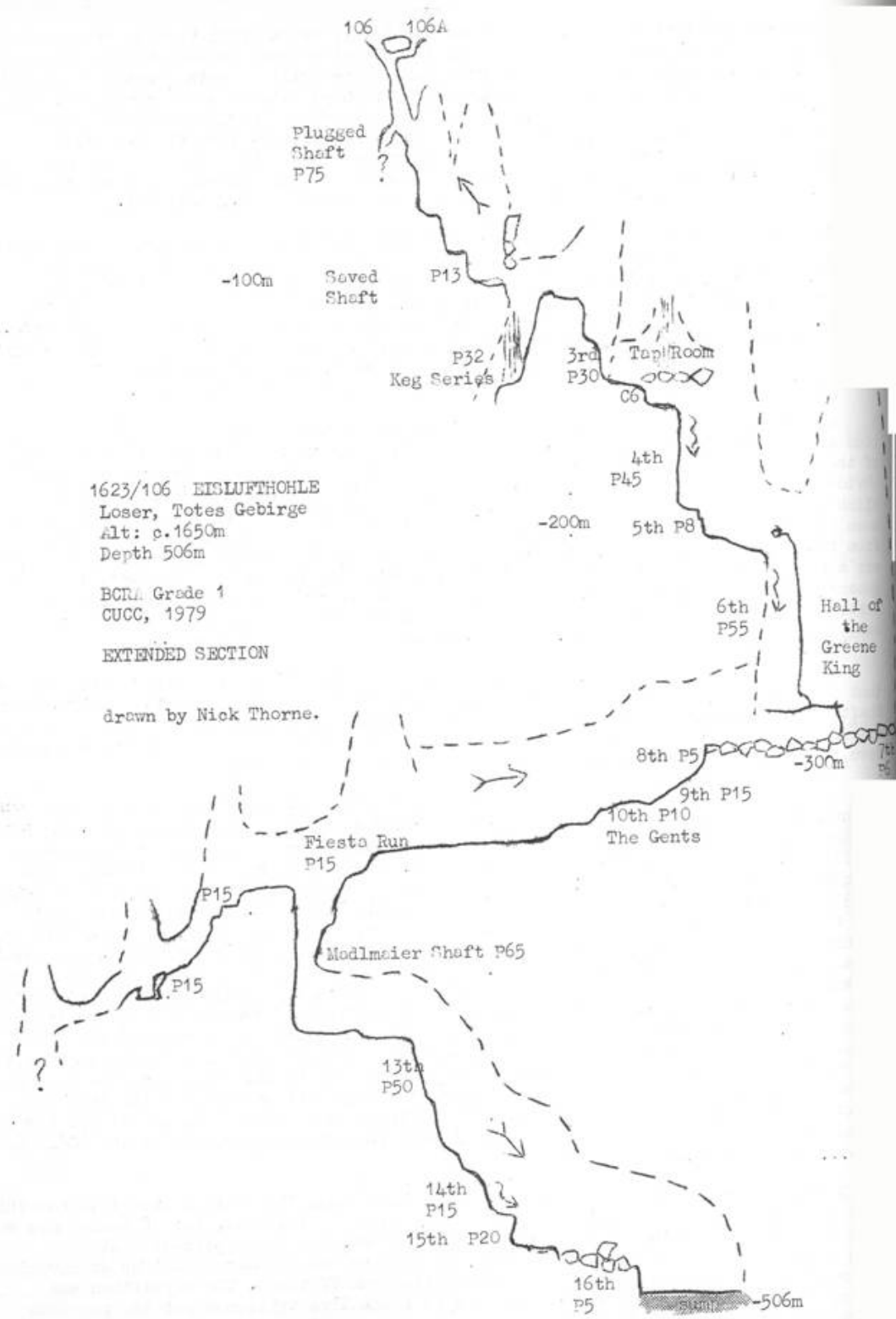
Andy Waddington, 1979

Terminal Sump at -506m, 1979



Andy Waddington, 1979

Eislufthöhle 1979

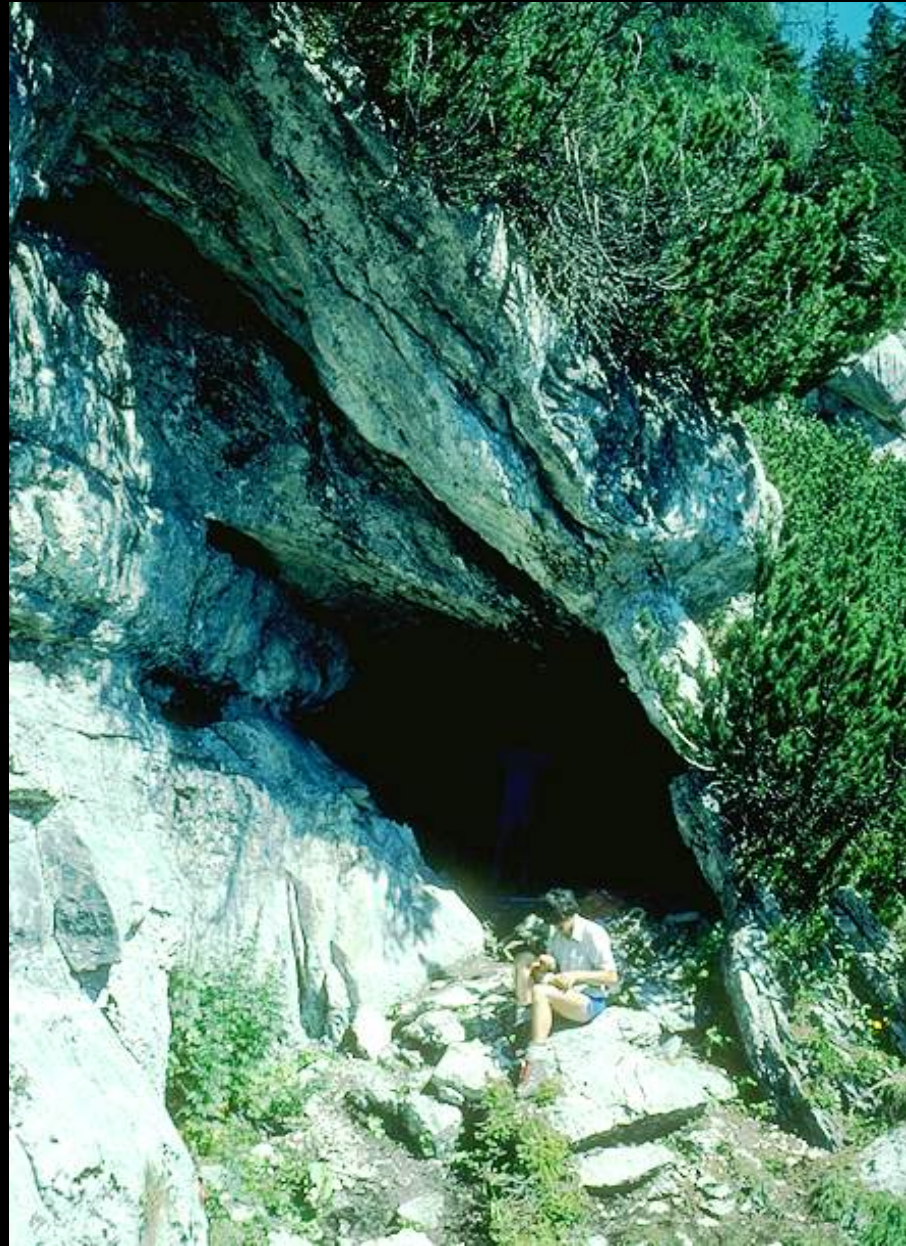


Exploration 1970s

Eislufthöhle	506m deep 1977-79
Bräuninghöhle	216m deep 1977
Schneewindschacht	256m deep 1977
Gemshöhle	280m deep 1978

Stellerweghöhle
and
Schnellzughöhle

1980-1985



Chas Butcher, 1981

Exploration 1980s

Stellerweghöhle

971m deep

746m from entrance

Wolfhöhle

426m deep

Knossos - Kaninchenhöhle



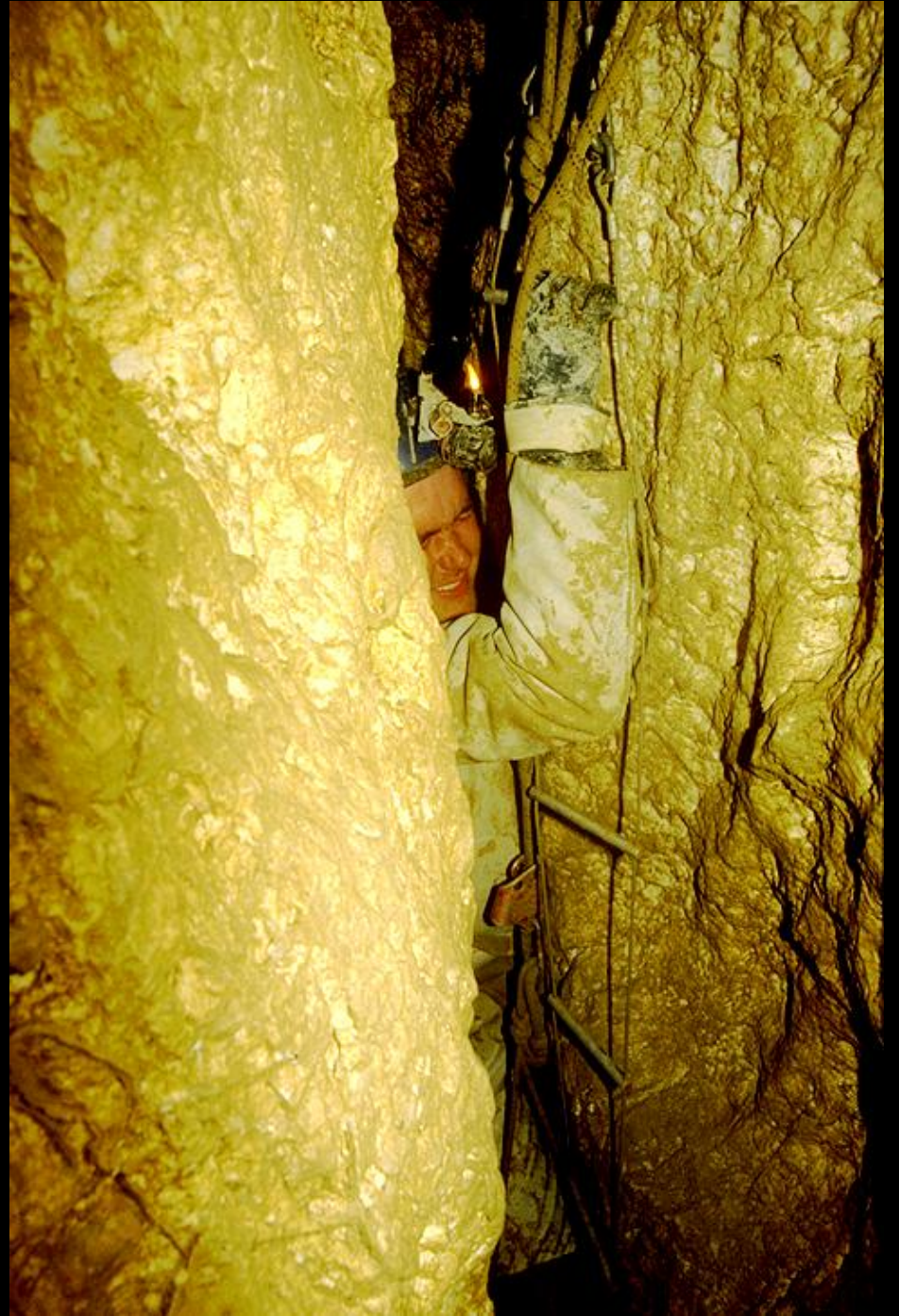
Andy Atkinson, 1994

Carrefour - Kaninchenhöhle



Andrew Atkinson, 1992

The Squeeze - Kaninchenhöhle



Ian Millar, 1988 or 89

Kaninchenhöhle
d entrance

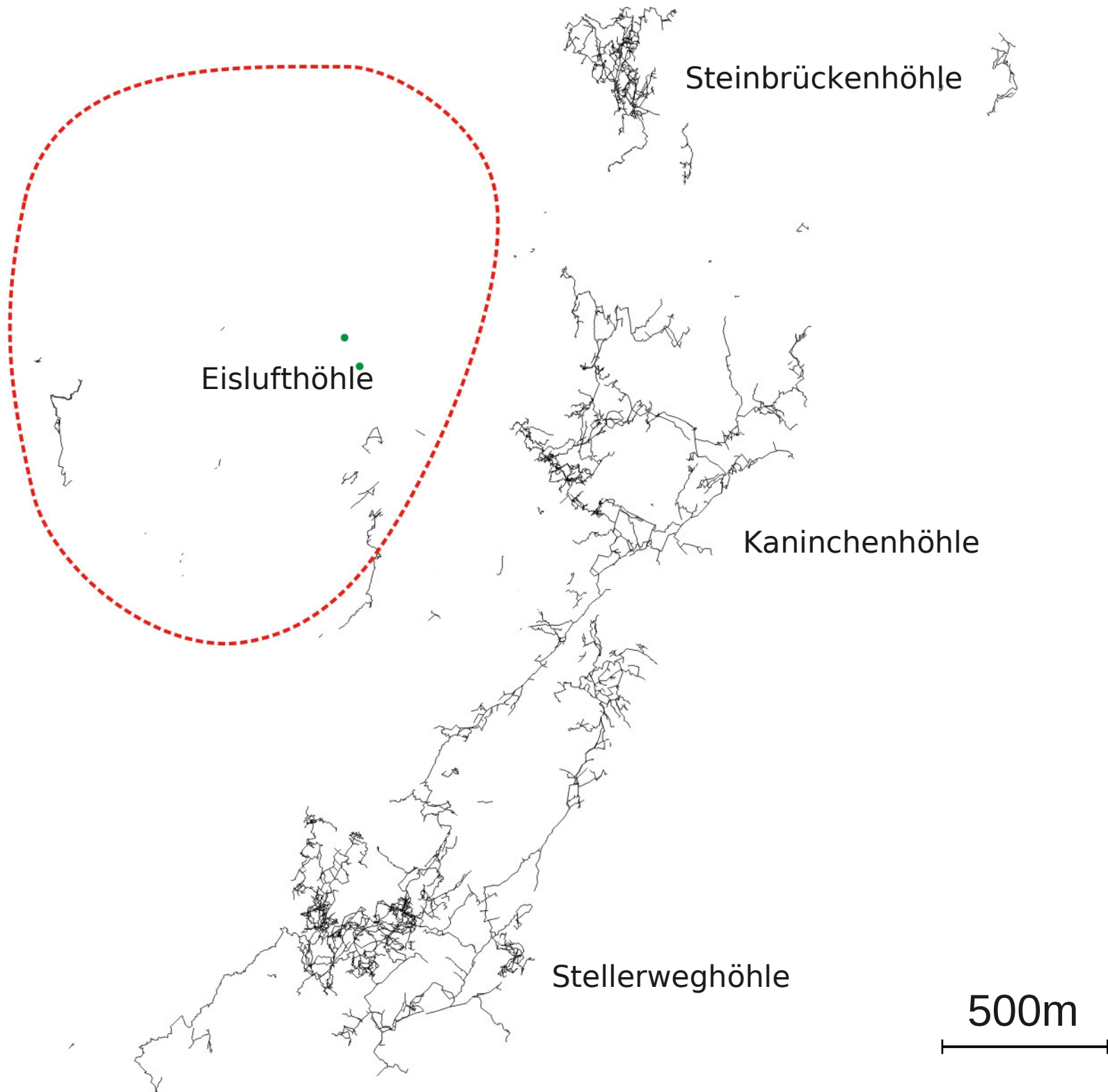


Andrew Atkinson, 1995

Exploration 1988-2003

Kaninchenhöhle	524m deep 21,593m long
Stellerweghöhle	971m deep 9353m long
Total System	1042m deep 59,794m long
Steinbrückenhöhle	621m deep 15,994m long

2003



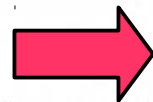
Eislufthöhle

Steinbrückenhöhle

Kaninchenhöhle

Stellerweghöhle

500m



Plugged Shaft P75

-100m

Saved Shaft

P13

P32
Keg Series

3rd
P30

Tap Room

C6

4th
P45

-200m

5th P8

6th
P55

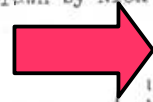
Hall of the
Greene
King

1623/106 EISLUFTHOHLE
Loser, Totes Gebirge
alt: c.1650m
Depth 506m

BCRA Grade 1
CUCC, 1979

EXTENDED SECTION

drawn by Nick Thorne.



8th P5

-300m

9th P15

10th P10

The Gents

Fiesta Run
P15

Modlmaier Shaft P65

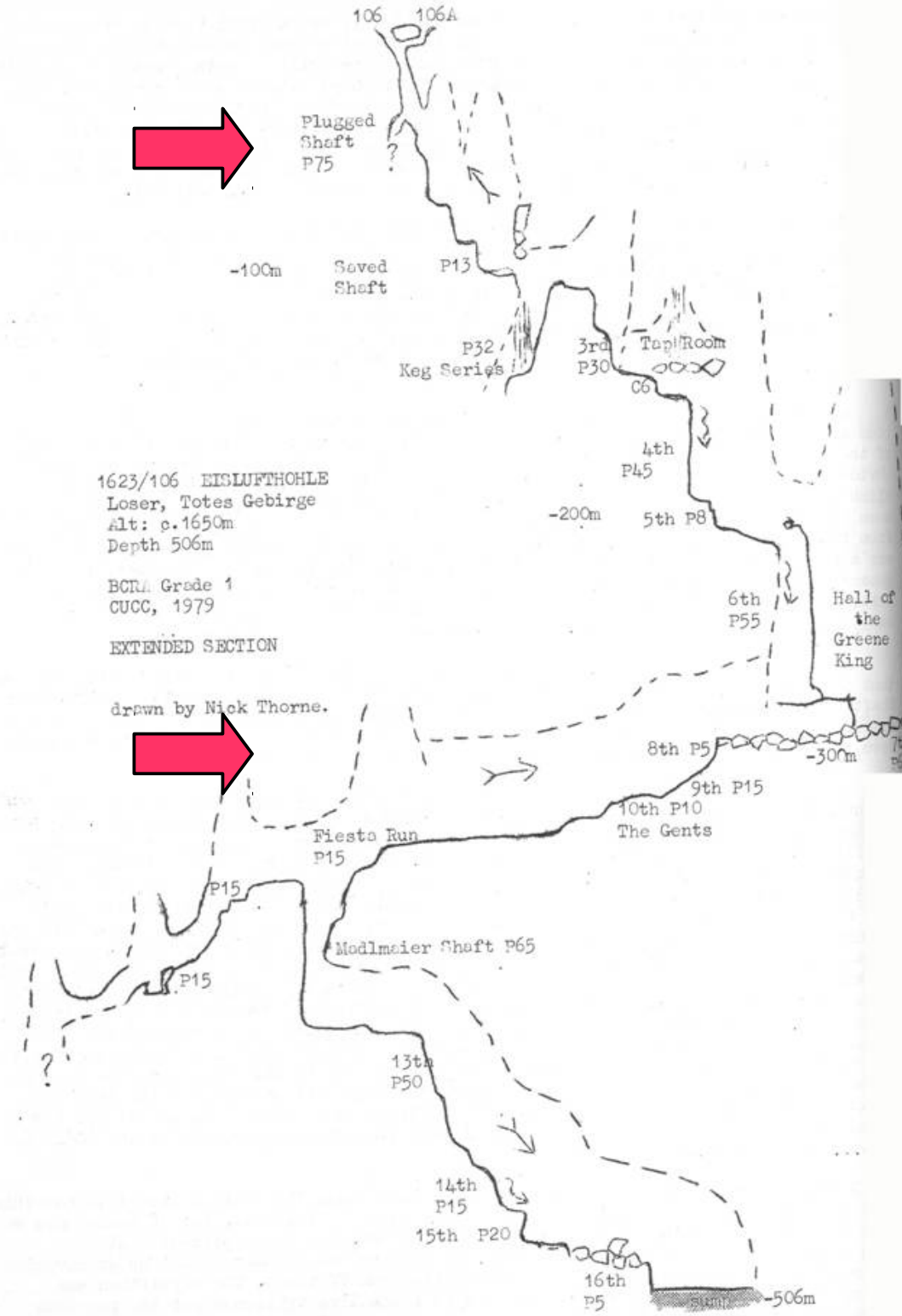
13th
P50

14th
P15

15th P20

16th
P5

-506m





**Camp
2004-2007**

Eislufthöhle bivi













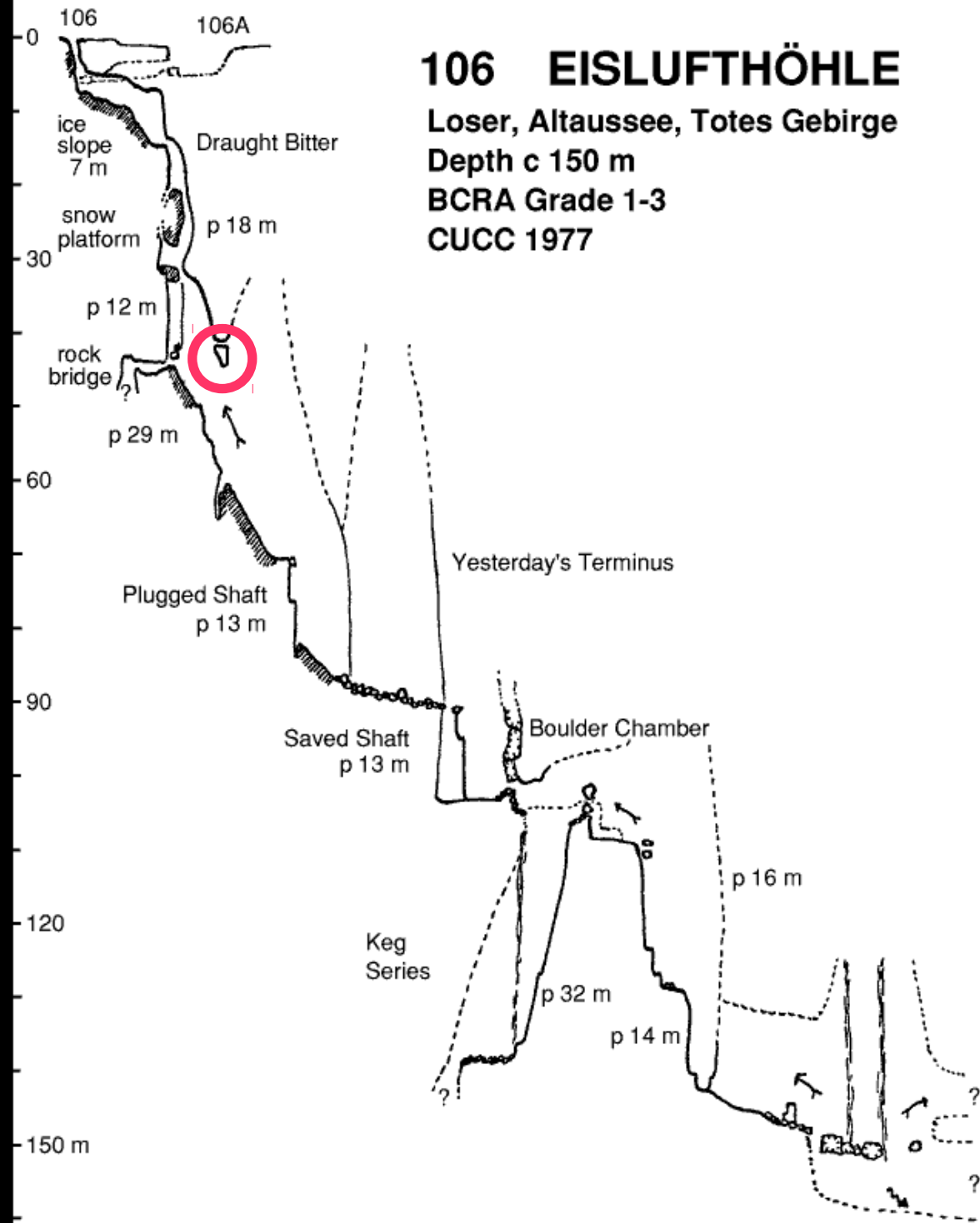
106 EISLUFTHÖHLE

Losser, Altaussee, Totes Gebirge

Depth c 150 m

BCRA Grade 1-3

CUCC 1977



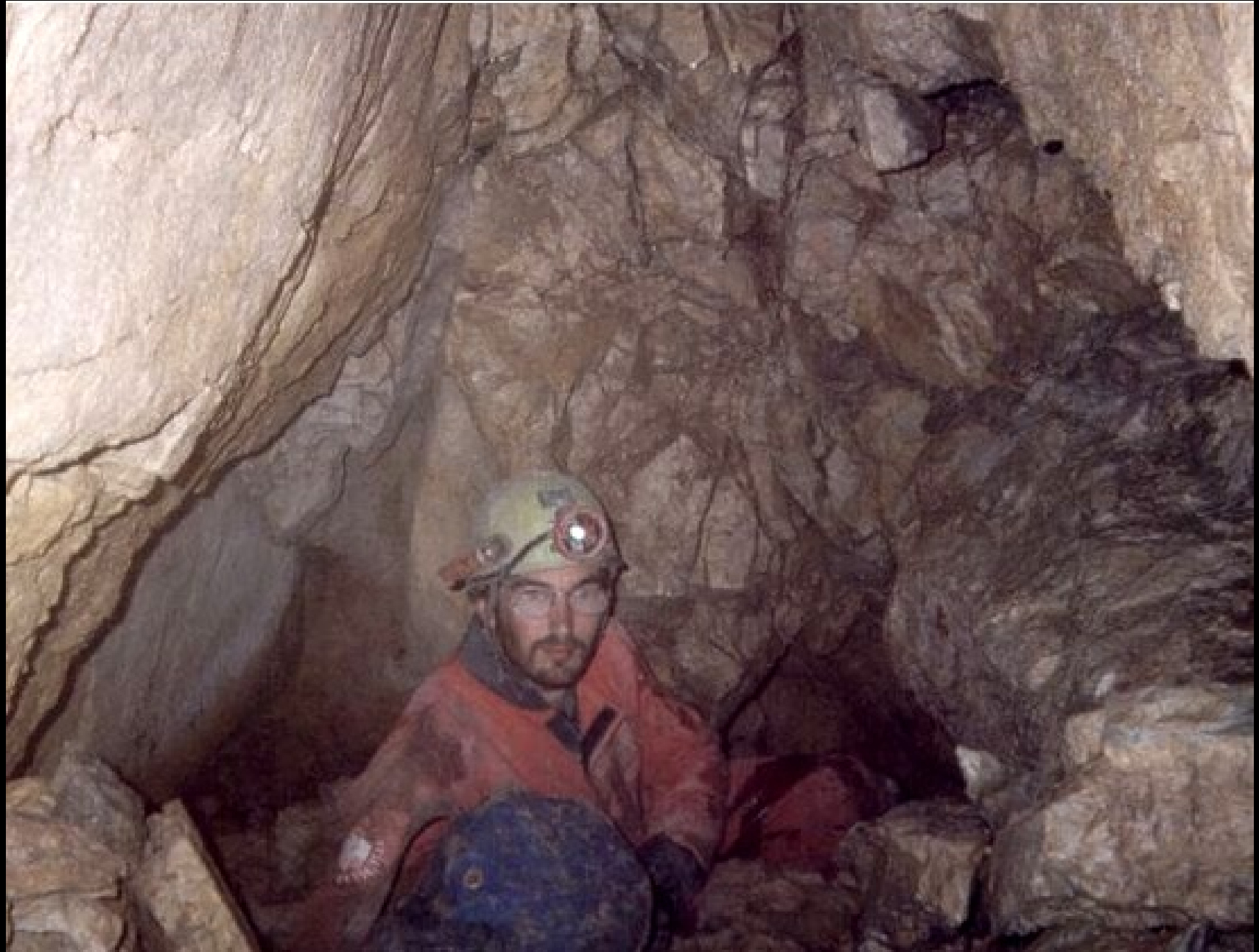
Climbing into The Testtubes



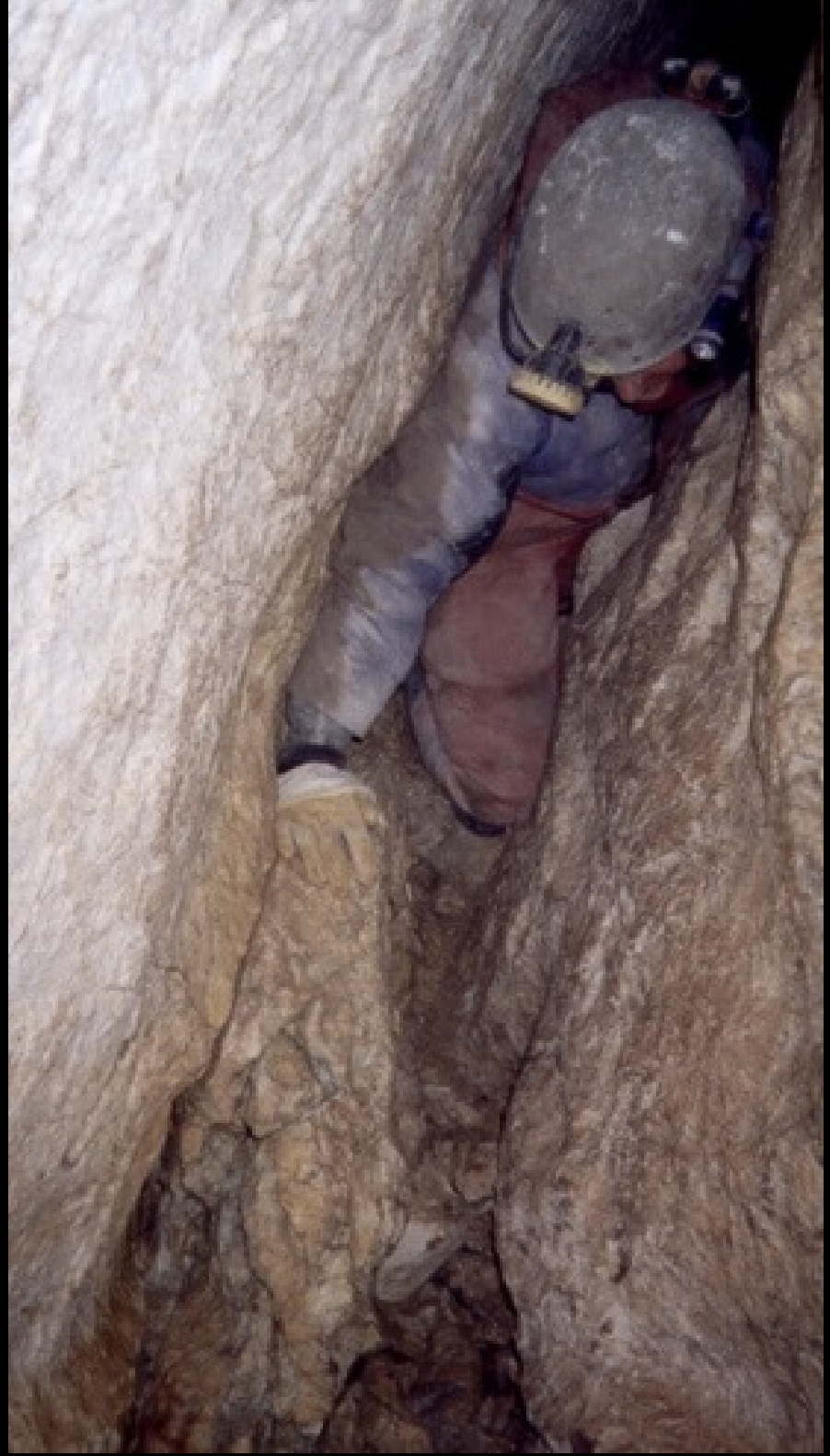
The Testtubes



The Testtubes



The Testtubes



The Testtubes



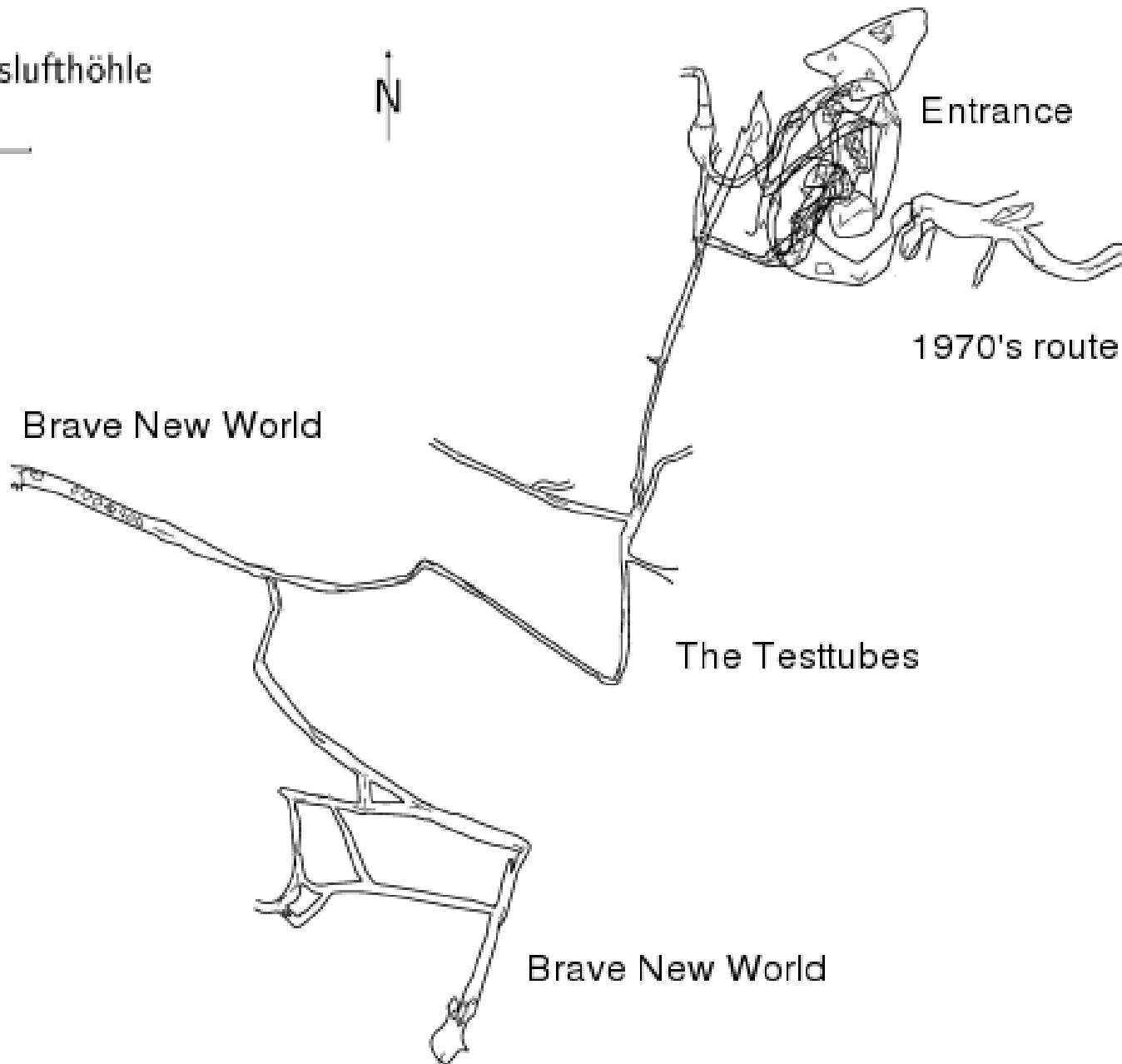
The Testtubes



The Testtubes

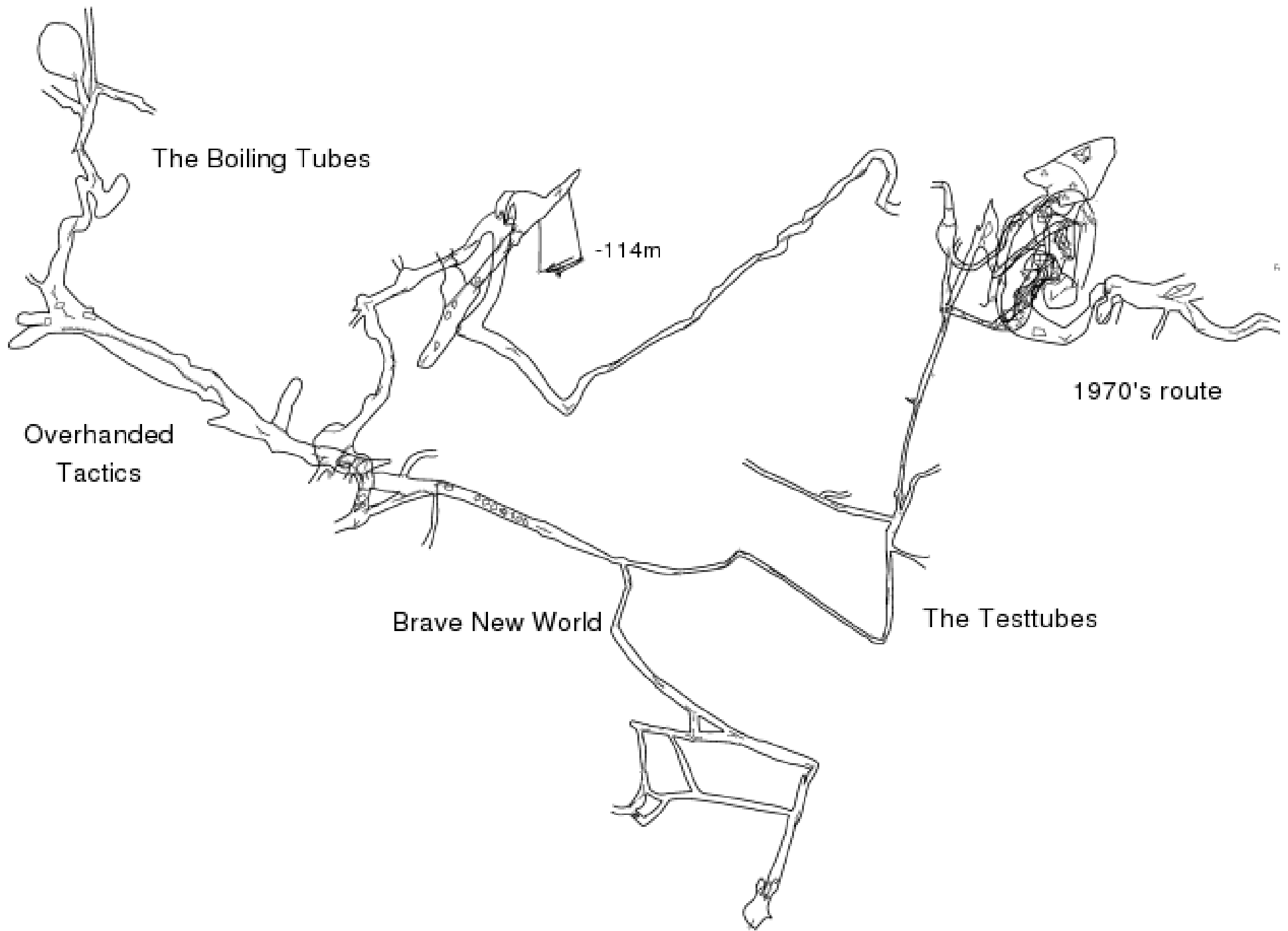


1623/76 Eislufthöhle



Brave New World





Brave New World



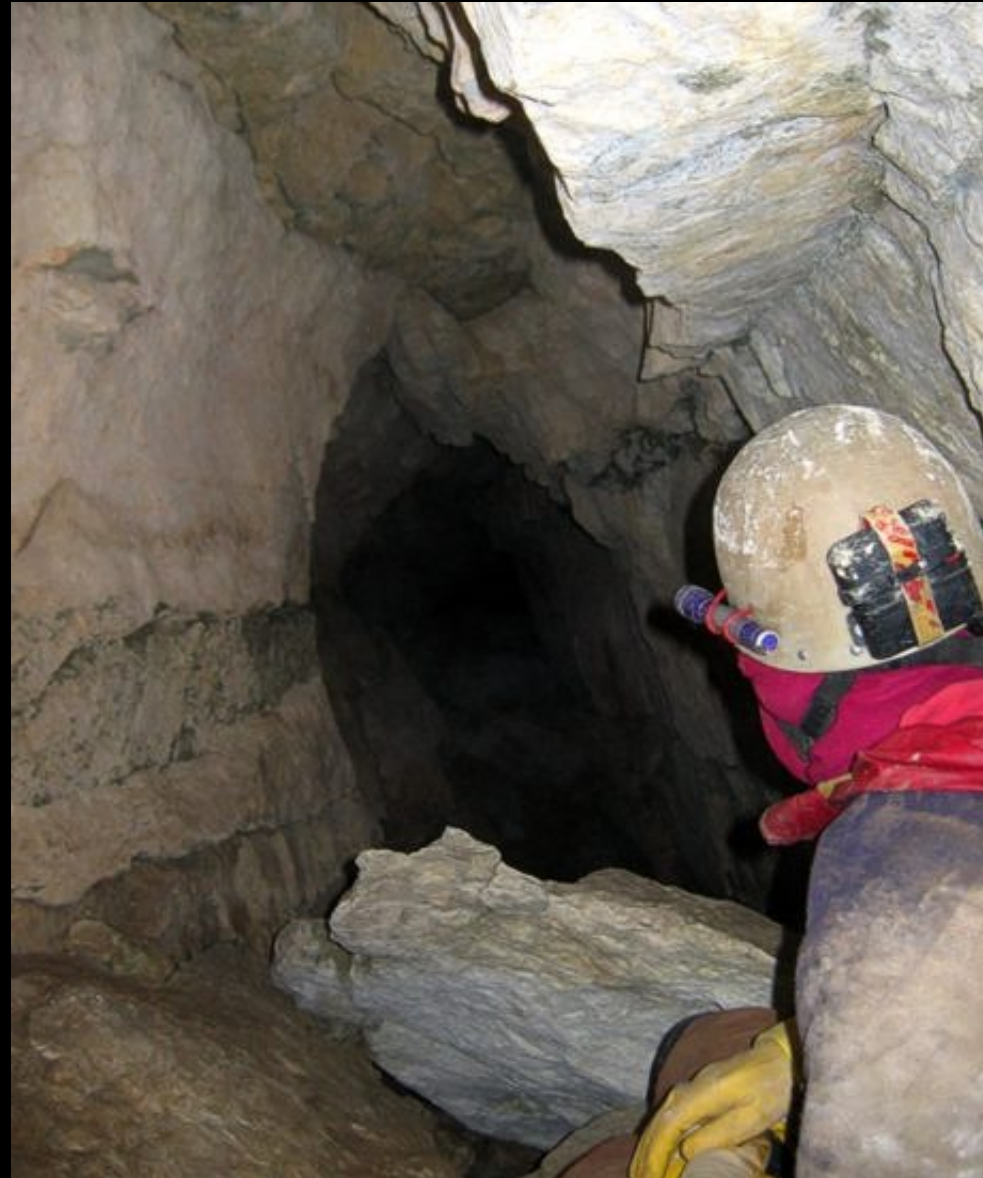
Brave New World



Brave New World



Brave New World



Brave New World



Brave New World



Brave New World

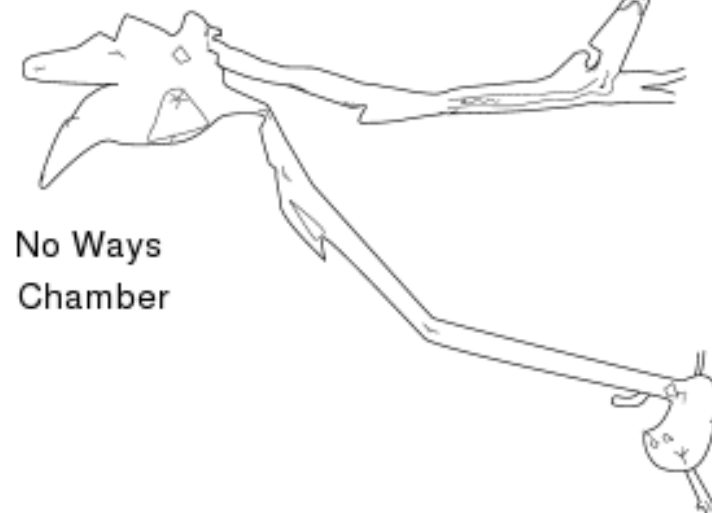


Brave New World



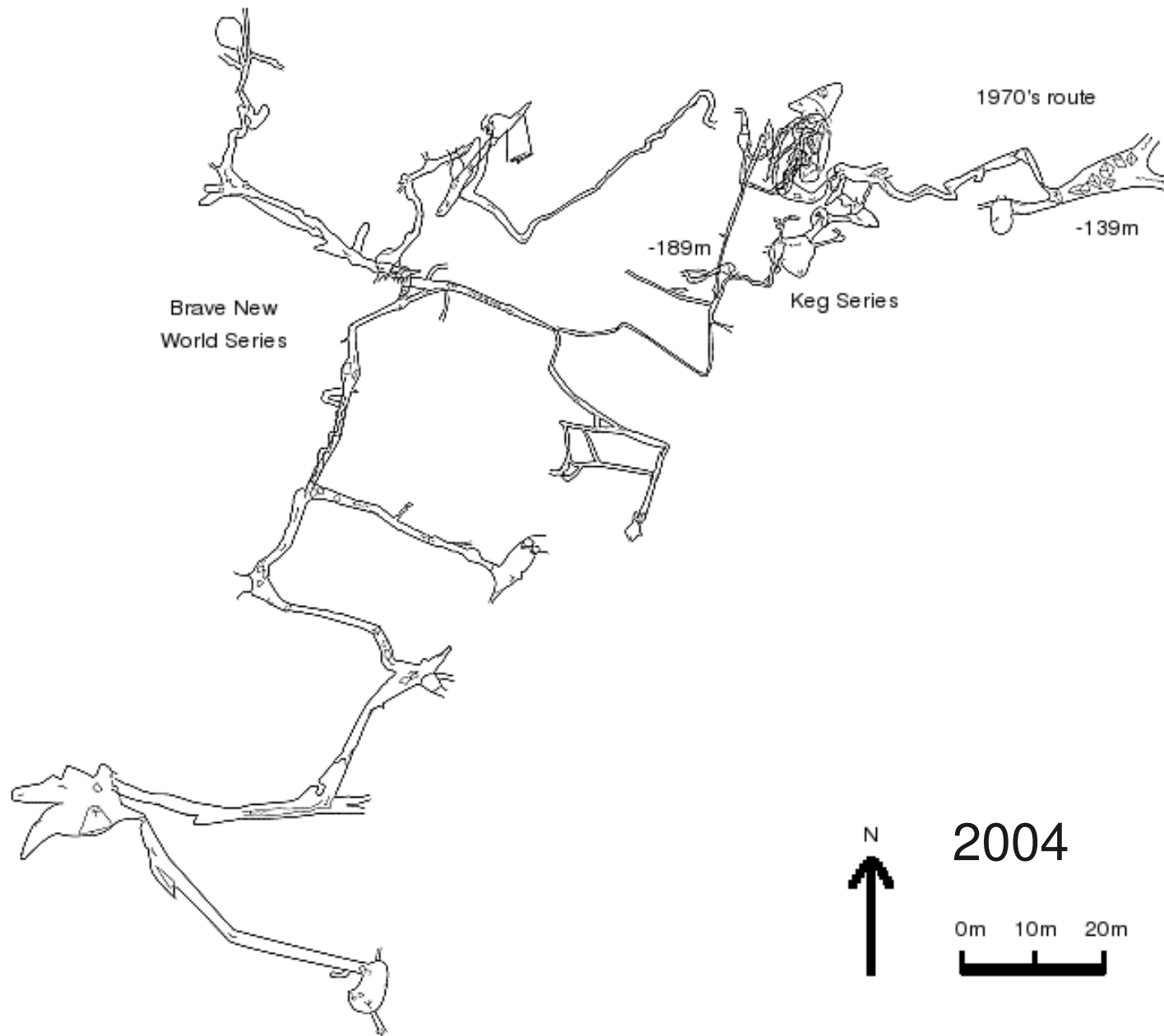
Hidden Promise

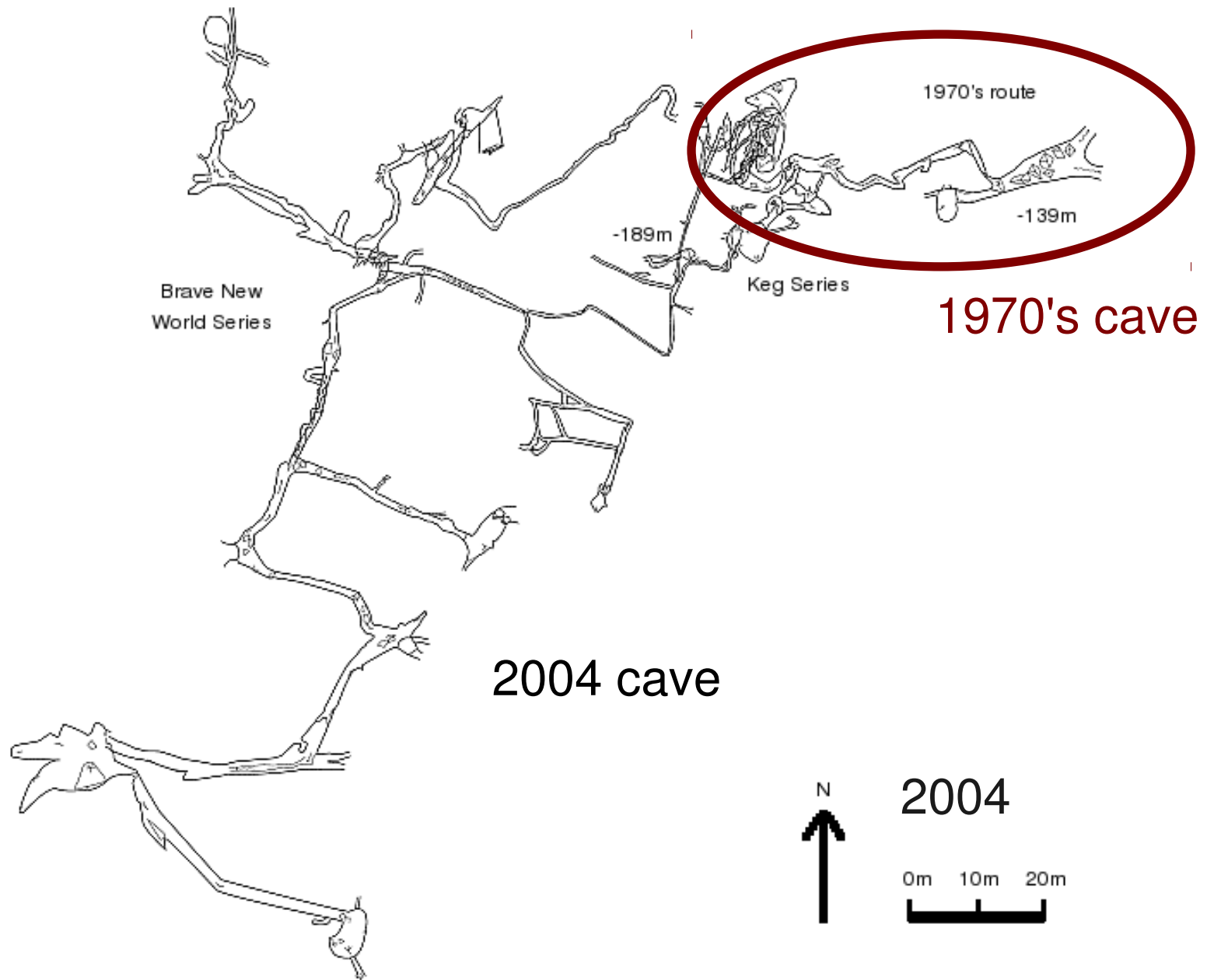
Branch Line



No Ways Chamber

All-ways Chamber

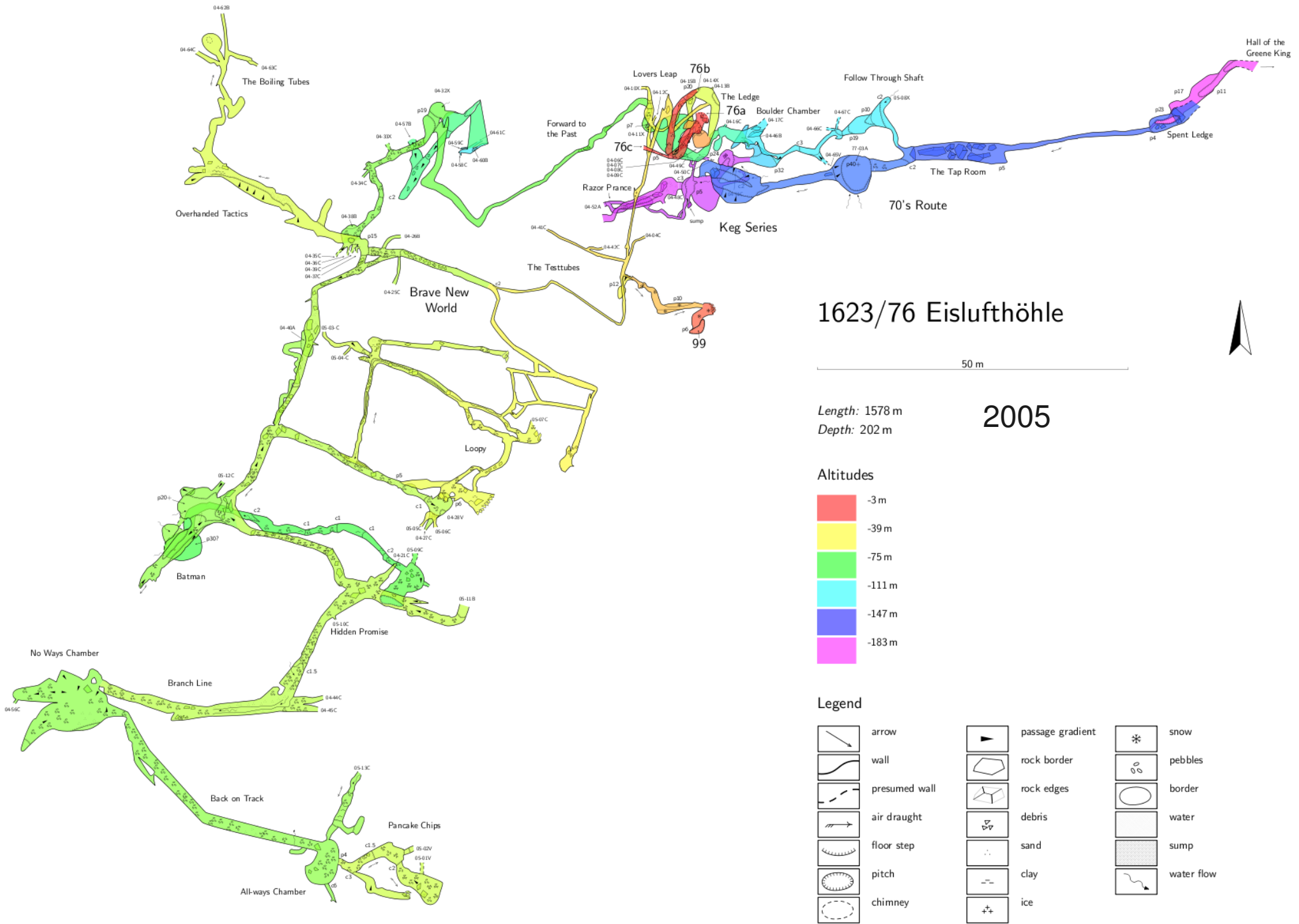


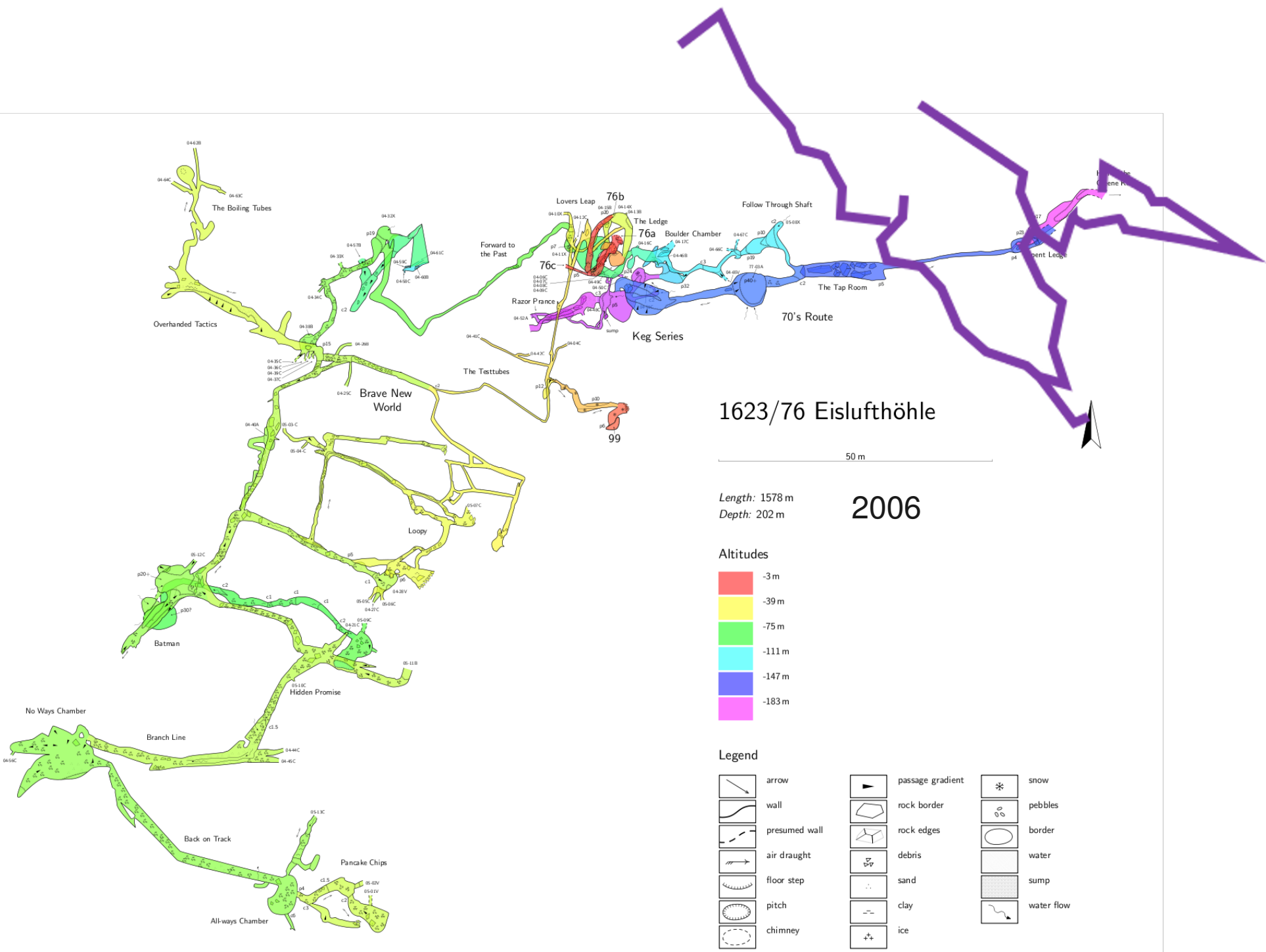


End of 2004

- 50+ new leads
- horizontal development
- 434m from the 56km SMK system







1623/76 Eislufthöhle

50 m

Length: 1578 m
Depth: 202 m

2006

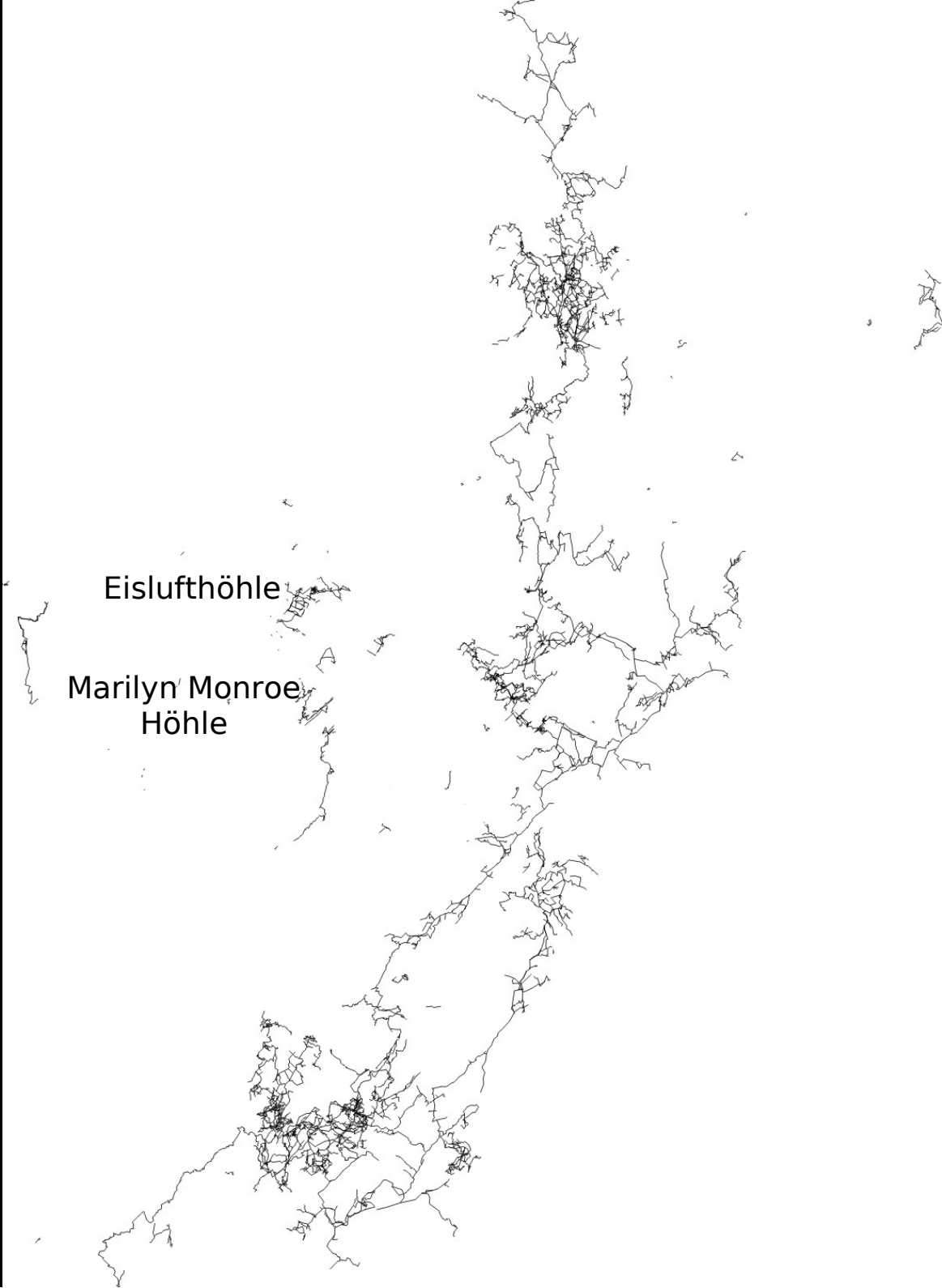
Marilyn Monroe Höhle



Oly Betts, 2007



Andrew Atkinson, 2007



Eislufthöhle

Marilyn Monroe
Höhle